

# CDP annual report 2024/25 Health and Wellbeing Board

4<sup>th</sup> February 2026

JLHWS priorities this report contributes to:

- Supporting people with mental health problems to live fulfilling, meaningful and healthy lives.
- Reduce homelessness and the harm caused.
- Increase levels of employment and income to reduce poverty.

Why these priorities matter:

- Substance misuse and poor mental health often co-exist, creating cycles of harm, inequality, and social exclusion.
- Supporting recovery contributes to improved wellbeing, housing stability, and employment opportunities.
- Addressing drug-related harm reduces pressure on health, social care, and criminal justice systems.
- Aligning with this priority ensures that the Combatting Drugs Partnership delivers integrated, person-centered support across agencies.

- ✓ The production of a synthetic opioid's preparedness plan.
- ✓ Completion of the Children and Young People's (CYP) service improvement framework from ADPH London.
- ✓ The drug and alcohol indicator dashboard has been reviewed and updated to align with CDP priorities.
- ✓ Adults in treatment with our drug and alcohol service provider has risen to 1,018 (May 2025).
- ✓ Young people in treatment with our drug and alcohol service provider has more than doubled as compared to the year before.
- ✓ Ongoing multi agency safeguarding training around substance use for adults and children delivered by CGL

Reducing drug use

Reducing drug-related crime







**Reducing drug-related deaths and harm**

Reducing drug supply

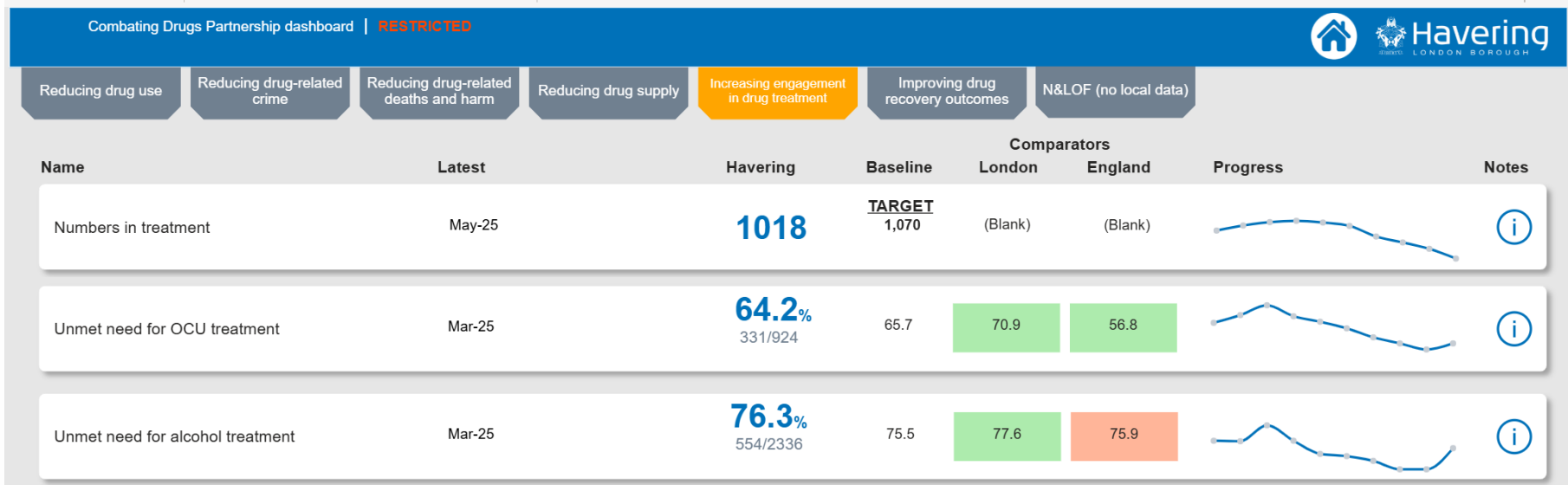
Increasing engagement in drug treatment

Improving drug recovery outcomes

N&LOF (no local data)

Name	Latest	Havering	Baseline	Comparators		Progress	Notes
				London	England		
Deaths from drug misuse rate per 100,000	2021-23	<b>2.9</b> per 100,000	6.8	3.8	5.5		
Hospital admissions for substance misuse (aged 25+) rate per 100,000	Mar24 to Feb25	<b>7.86</b> per 100,000	61.8	18.5	26.5		
Alcohol-specific deaths (within last 12 months) rate per 100,000	Apr-25	<b>5.98</b> per 1,000	11.2	10.2	13.4		

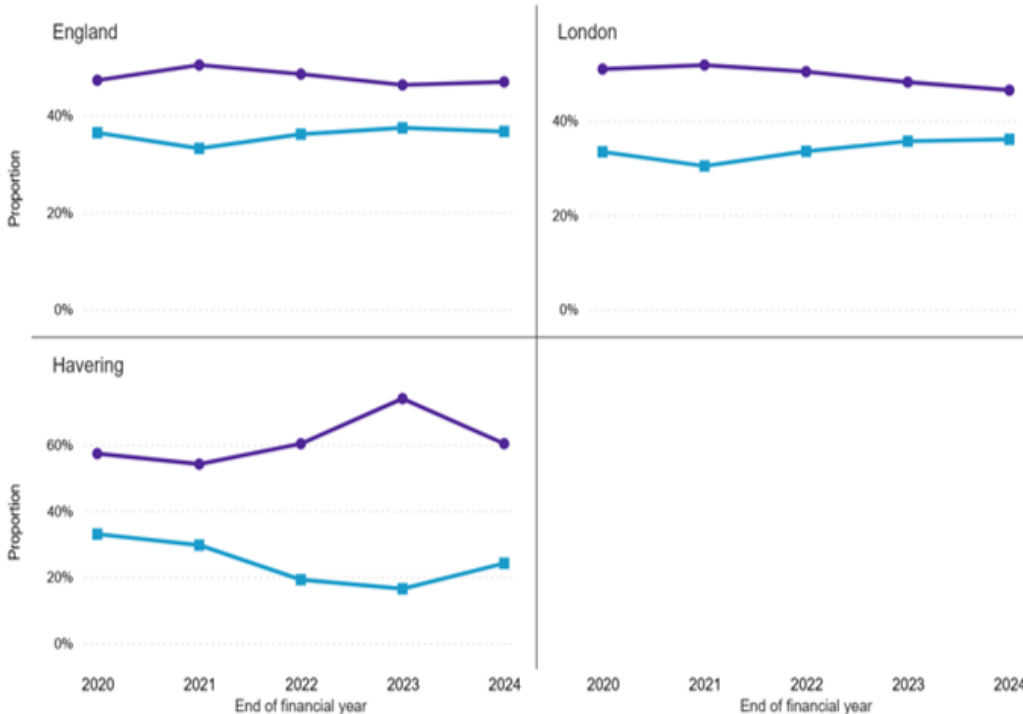
- Hospital admissions for substance misuse has been decreasing in the past year and is lower than both London and England averages.
- In the past 12 months (April 2024 - April 2025), the rate of alcohol-specific deaths in Havering was 5.98 per 100,000, lower than both the London average of 10.1 and the England average of 13.5 per 100,000



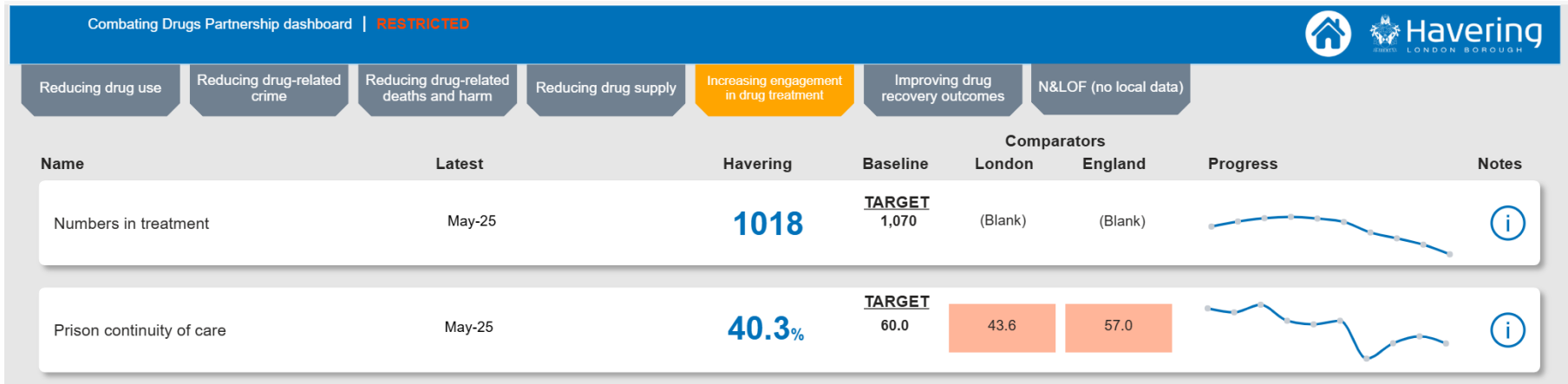
- The proportion of opiate and/or crack cocaine users in Havering not currently engaged with treatment was 64.2% as of March 2025. This rate is lower than the London average of 70.9% but remains above the England average of 56.8%.
- The proportion of adults with alcohol dependency not currently engaged in treatment was 76.3% as of March 2025. This rate is lower than the London average of 77.6% but slightly higher than the England average of 75.9%.

## Treatment exits - All in treatment

All in treatment - (Opiate, Non-opiate only, Alcohol only, Non-opiate & alcohol) - (Male, Female) - (18-29, 30-49, 50+)



- ❑ This graph shows the proportion of all treatment exits that were either successful completions or dropouts.
- ❑ Nationally and across London, completion rates have remained relatively stable, with England averaging around 45–50% and London slightly below this.
- ❑ Havering has consistently performed above both the London and England averages in successful completions of treatment.
- ❑ Havering's treatment exits due to service users dropping out has slightly increased to 25% however it is still lower than England (37%) and London (36%)



Havering has a lower rate of prison continuity of care (percentage of prison leavers with continued treatment need picked up in the community within three weeks).

We are still below our target of numbers in treatment.

- During 24/25, Havering CDP continues to operate under a business-as-usual model, with a 5-year strategy in place, along with a rolling action plan. Strong links continue between participating agencies and other relevant local partnerships.
- Quarterly updates to the Combatting Drugs Partnership.
- Progress is outlined in the annual progress report and will continue to be presented at the Health and Wellbeing Board annually.
- Progress also presented to HSAB and Community Safety Partnership.